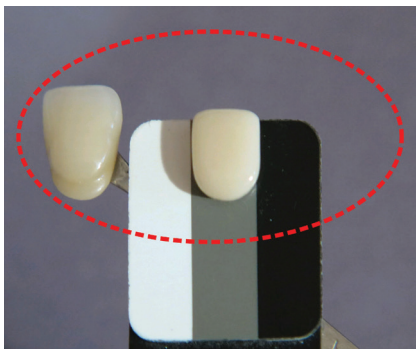


Essentials Guide

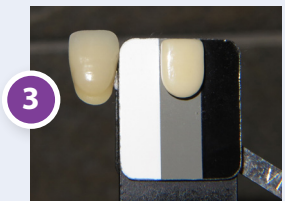
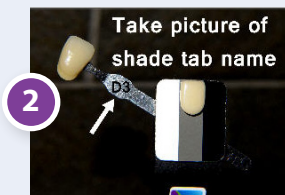
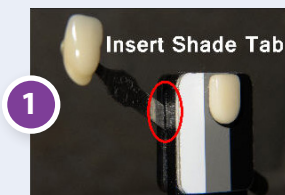
for achieving optimal shade matching.

What needs to be seen in your pictures.



How to insert a Shade Tab:

- We recommend the insertion of a shade tab.
 - **Figure 1**, insertion point.
 - **Figure 2**, take a picture of the shade tab name and upload it into your ShadeWave case.
 - **Figure 3**, complete insertion.
- **What shade tab?**
Pick what you think is closest to the tooth, even if it is not correct. ShadeWave works better with an added shade tab reference.



Need assistance? Call or email:



ShadeWave Support

(425) 557-7788

support@shadewave.com

- Take pictures prior to prep so the teeth are hydrated.
- *Always* put the incisal edge of the shade tab up.
- Take three pictures: One superior, one inferior and one straight on to the teeth.
- Be on the same plane as the patient with the back of the chair up. Either stand and raise the dental chair to your height or sit at their height.
- *Photo Documentation is vital:* (1) Before pictures, (2) Crown on the bench and (3) the seated tooth with the shade reference.

**To disinfect, wipe with (CaviWipe®) alcohol.
DO NOT COLD STERILIZE (SOAK) OR AUTOCLAVE.**

Using Shade Reference in photos:



4

- Hold the Shade Reference below the tooth to be matched at an angle to the flash. **(Figure 4)**. Limit unwanted highlights and keep the black "black" not gray.
- **Bad example: Figure 5** is not good because the black looks "gray."
- **Good examples: Figures 6, 7 and 8.** Note on Figure 8, open bite and second retractor holds the lips apart.

**Log-in and Watch
"How to Take Pictures" Video in
Help Section of ShadeWave.**

5



7



6



8

